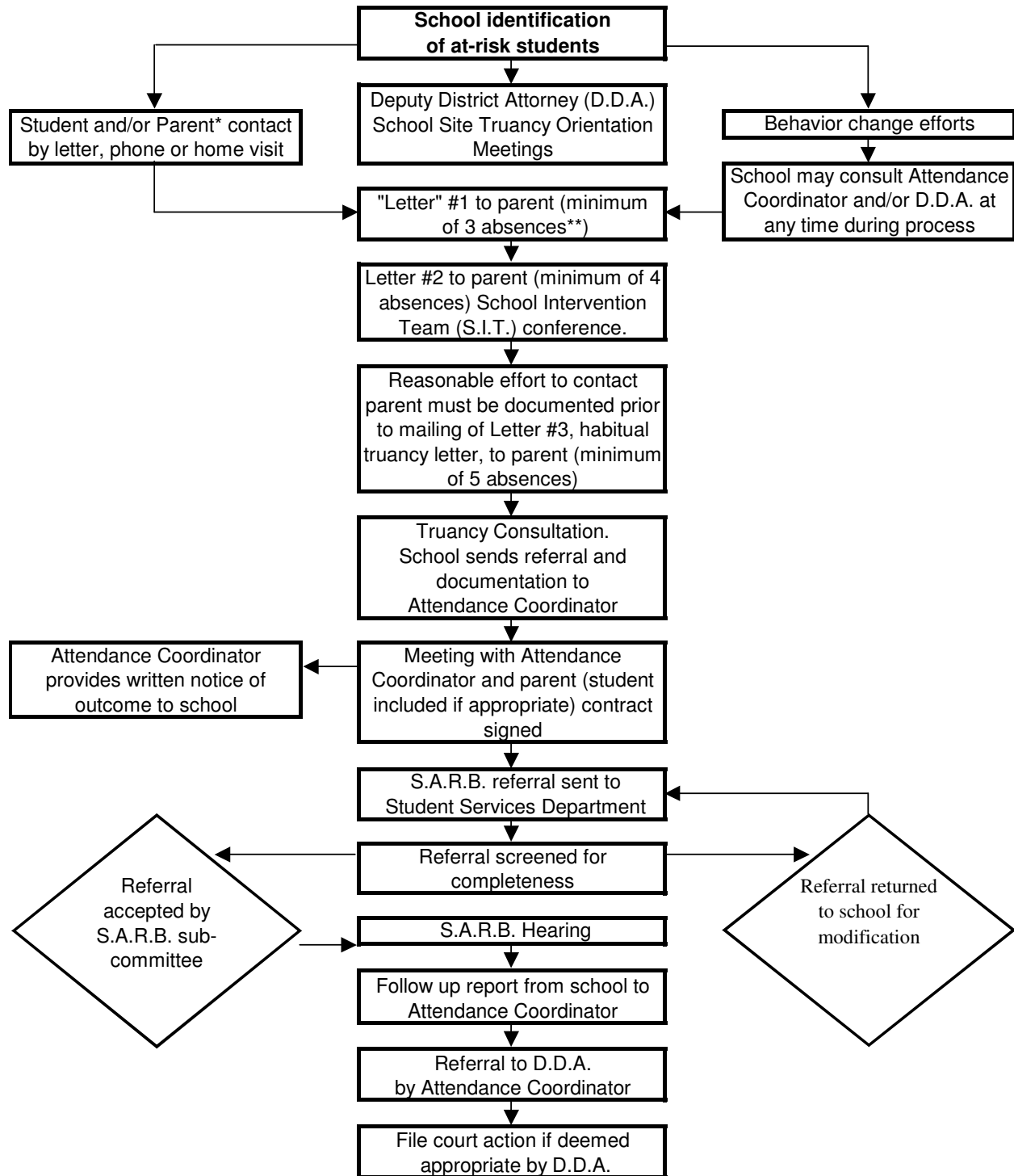


**BAKERSFIELD CITY SCHOOL DISTRICT ATTENDANCE ENHANCEMENT PROGRAM
(PROGRAM IMPROVEMENT SCHOOLS)**

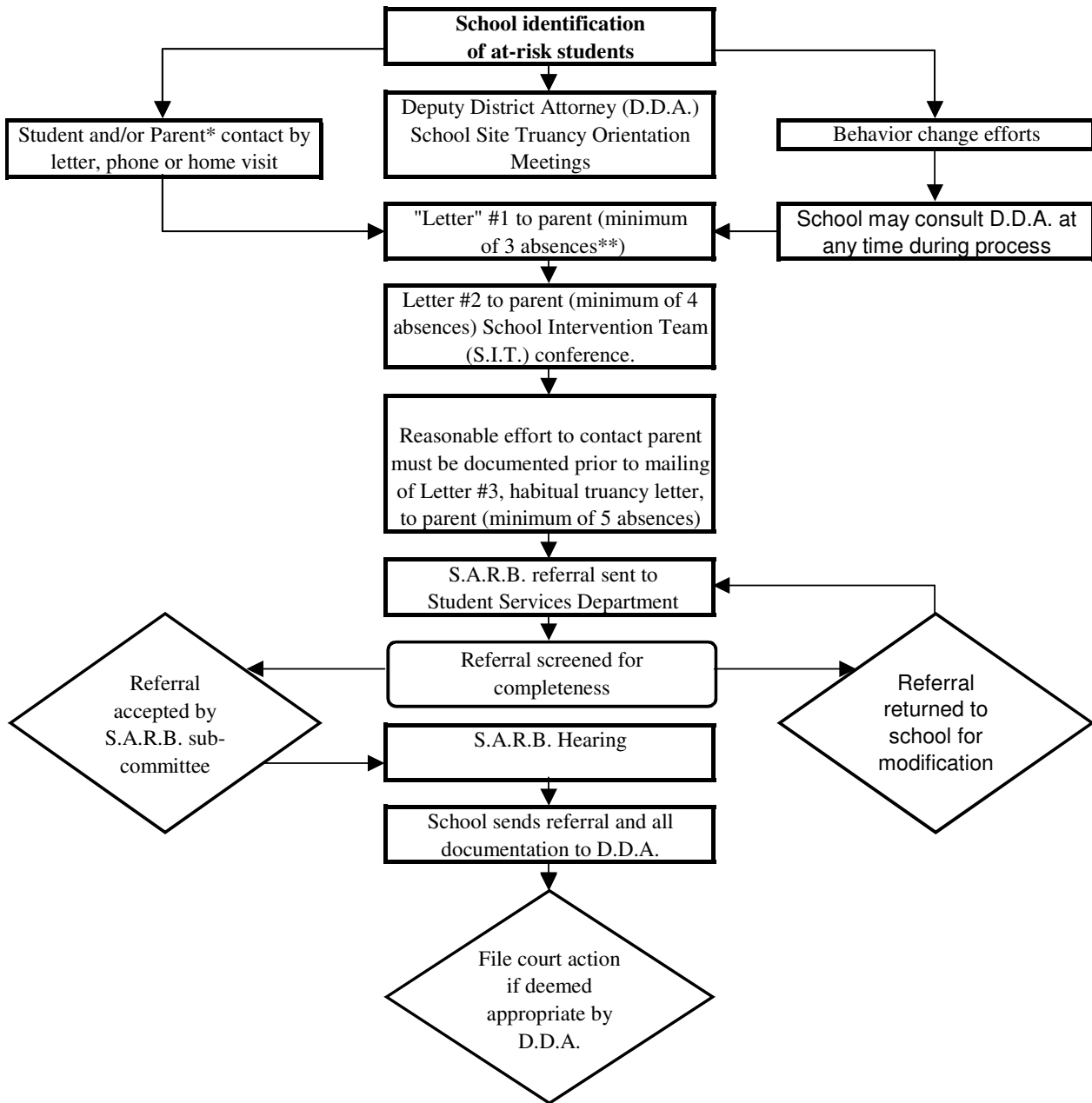


"Letter" refers to district adopted attendance letter containing specific legal notices.

*Parent includes legal guardian and person having control or charge of the child.

**Absences for this flow chart includes unexcused absences, late over 30 minutes, or a combination.

BAKERSFIELD CITY SCHOOL DISTRICT ATTENDANCE ENHANCEMENT PROCESS (Non-Program Improvement Schools)



"Letter" refers to district adopted attendance letter containing specific legal notices.

*Parent includes legal guardian and person having control or charge of the child.

**Absences for this flow chart includes unexcused absences, late over 30 minutes, or a combination.